



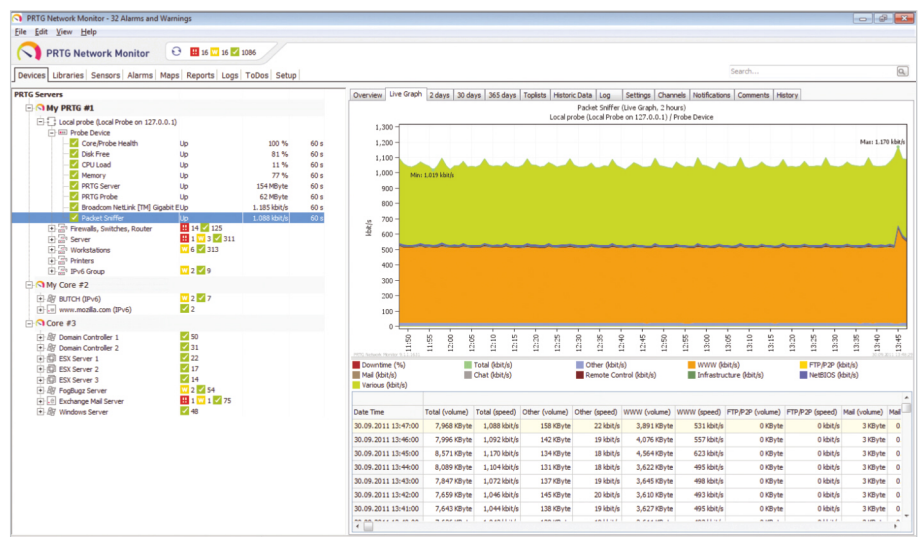
PRTG Network Monitor The All-In Monitoring Solution

Easy, failsafe, and complete control over your network, proven in more than **150,000** installations worldwide.

PRTG Network Monitor is the all-in monitoring solution that combines the whole expertise of the network monitoring company, Paessler, with a comprehensive set of monitoring features, an easy-to-use intuitive interface, and a state-of-the-art monitoring engine which is suitable for networks of any size. All of this comes in one license: no hidden costs, no add-ons, no extra efforts!

PRTG assures the availability of network components, and measures traffic and usage. It saves costs by avoiding outages, optimizing connections, workload and quality, while saving time and controlling service level agreements (SLAs).

Clear graphs and monitoring data give a quick overview of your networks' status. This picture shows the traffic of a Packet Sniffer sensor.



‘We were able to fully implement PRTG with about ten-times the features for less than the annual maintenance cost on the previous system.

Plus, it runs on about one-third of the hardware.

I’ve been in IT for more than 20 years and I’ve never seen anything like it.’

Jim Kirby,
Director of Engineering,
Dataware Services

Dataware Services, LLC, operates one of the largest public data centers in South Dakota

**Save time
and money:**
Systematic
network monitoring
helps you
avoid failures,
optimize networks, and
improve services.

You’re looking for ...

... an easy to use monitoring solution for your networks?

PRTG Network Monitor runs under Windows Server 2003 and 2008, as well as under XP, Vista, and Windows 7 and monitors Windows, Linux, Unix, and MacOS systems. PRTG is installed and set-up within minutes and can be updated with new versions in only three clicks thanks to the automated software update. It comes with its own database, an integrated web server, and an automatic network discovery. PRTG is consequently optimized for easy usage.

... one software solution to monitor your entire network, including devices, applications, traffic, and availability?

PRTG Network Monitor supports SNMP, WMI, Flow monitoring, as well as packet sniffing, and monitoring of IPv6 devices. It offers more than 115 pre-built sensors specifically designed for QoS monitoring, website monitoring, email monitoring, application monitoring, database monitoring, monitoring of virtual environments, and many others.

... monitoring of different sites from one central installation?

PRTG Network Monitor comes with ‘remote probes’ which can be installed on distributed networks and then send the monitoring data SSL-encrypted via Internet (no VPN required) to the core server of the central installation.

... a scalable enterprise monitoring solution?

The PRTG Network Monitor Enterprise Console supports viewing data of multiple PRTG installations at a glance: It displays aggregate information for all PRTG installations in one single program, even in huge setup scenarios. This is ideal for MSPs or enterprises that need to scale a large number of sensors.

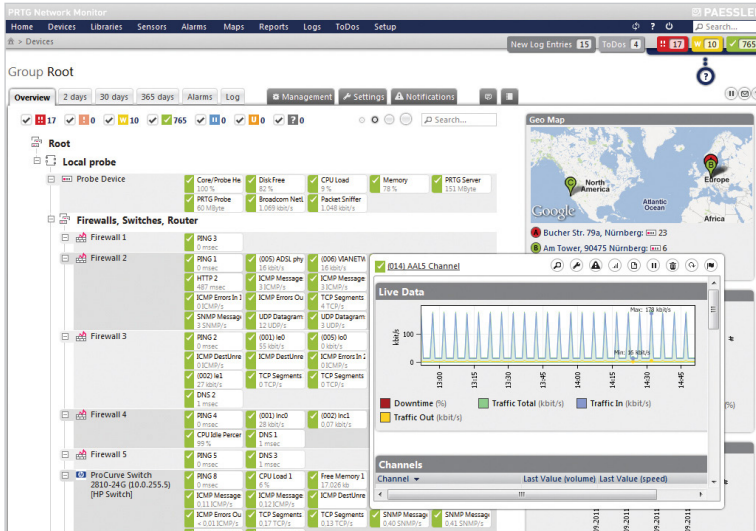
... high availability monitoring?

PRTG Network Monitor comes with a failover cluster in every license (up to five cluster nodes for Site and Corporate), which is a full monitoring cluster that makes sure monitoring will not be interrupted in case of a server failure or while updates are taking place.

... a comprehensive network monitoring solution that fits your budget with clear and fair licensing?

PRTG Network Monitor offers comprehensive monitoring functionality and scales up to larger networks of some thousand devices and even more for the price of an entry level monitoring solution. It includes the entire monitoring functionality in every license. No add-ons are required—no extra costs, no extra configuration and no extra maintenance efforts.

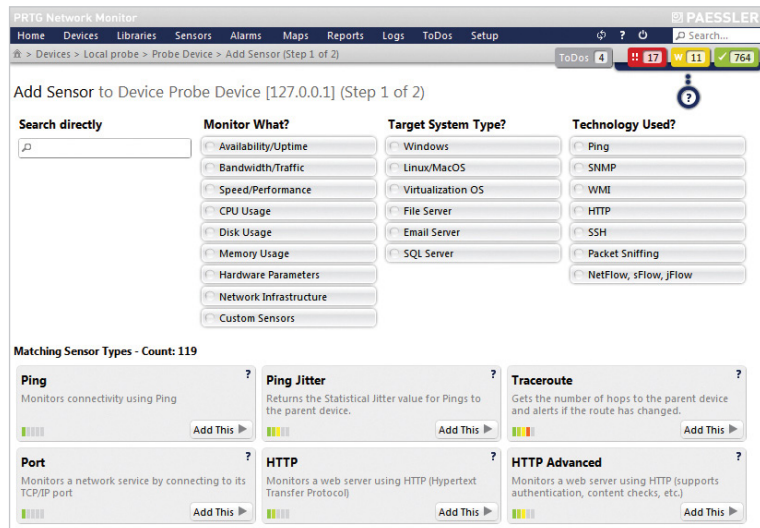
Easy to use
web interface



Easy to use web interface: fast and powerful, optimized for easy and intuitive use. This picture shows the PRTG device tree giving an overview of the entire monitored environment.

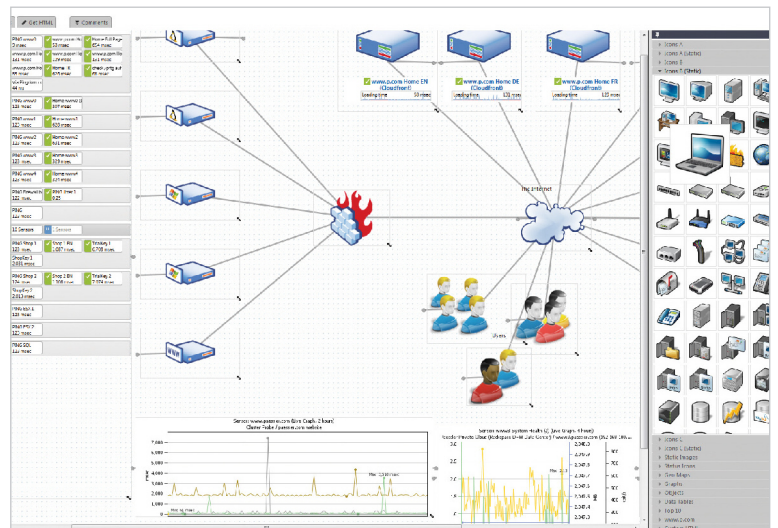
‘Three click’
assistant

Three click assistant:
selecting and adding of new
sensors fast and easy.



Create
customized ‘Maps’

Create customized ‘Maps’: using
PRTG’s built-in drag&drop maps
editor the display of monitoring
status, graphs, and tables
becomes even more clear.



Technical Data

Basic Features

- Bandwidth, usage, activity, uptime, and SLA monitoring
- Suitable for networks of all sizes
- Monitoring of multiple networks/locations with one license
- Failover cluster included in every license, multiple cluster nodes possible
- HTTP-based API for interfacing with other applications
- Automatic network discovery and sensor configuration (IPv4 and IPv6)

Sensors and Protocols

- More than 115 sensor types (Ping, HTTP, WMI, SMTP, POP3, DNS, and many others)
- Network traffic and behavior analysis using SNMP, NetFlow v5/v9, sFlow v5, jFlow v5, packet sniffing
- Smart sensors (e.g. automatic cognition and monitoring of multiprocessor systems)
- Preconfigured device templates for Cisco routers, SQL servers, etc.
- Dedicated hardware sensors for Dell, HP and APC devices
- Sensors for monitoring virtualized environments (VMware, HyperV, Virtuozzo, XEN, etc.)
- Three click add sensor dialog
- Programmable triggers and custom sensors
- Native and agent-less Linux monitoring

Display

- Elegant, fast, and powerful web-based interface
- Google Maps integration
- Customizable tree view display and individual libraries
- Enterprise Console for viewing multiple PRTG installations at a glance
- iOS App, Android App, and 'Mini-HTML' interface for mobile devices
- Hierarchical view (probes, groups, devices, sensors, channels)
- List of sensors (alphabetical, fastest, slowest, by tag, by type, etc.)
- Appealing graphs showing the monitoring data of specified periods from hours up to years
- Customizable 'Maps' that bring together monitoring status, graphs, and tables, using personalized layouts

Alerting and Reporting

- Alerts according to individually configured criteria
- Various means of notification (email, SMS, pager message, HTTP request, exe, script, syslog, etc.)
- Periodic and customizable reports (HTML, PDF)
- Detailed log files (detailed information about all activity and results)

System Requirements and Data Storage

- Data is stored in Paessler's own powerful data storage system, highly optimized for monitoring data (no SQL server required)
- Small download, easy to install, automatic software update
- Runs on Windows Server 2003 and 2008, XP, Vista, and Windows 7

Licensing

- All features included in every license, no add-ons
- Easy upgrade by paying the price difference

'PRTG is a key to maximizing productivity in a tough economy.

It ensures that we're always providing the best service to students, but also positions each resource for maximum benefit to the traditional employees, yielding higher results and less wait time throughout.'

Travis Foschini,
Manager of Information Technology,
Columbia Southern University

Columbia Southern University is one of the first completely online universities in the USA



Published: October 2011

All rights for trademarks and names are property of their respective owners.

 **PAESSLER**
the network monitoring company

**Sole Philippine Premium Partner and Reseller
SAV25 Data Systems**

+632 893-2488 ; +632 984-6055

websales@sav25.com www.sav25.com