

 PAESSLER®

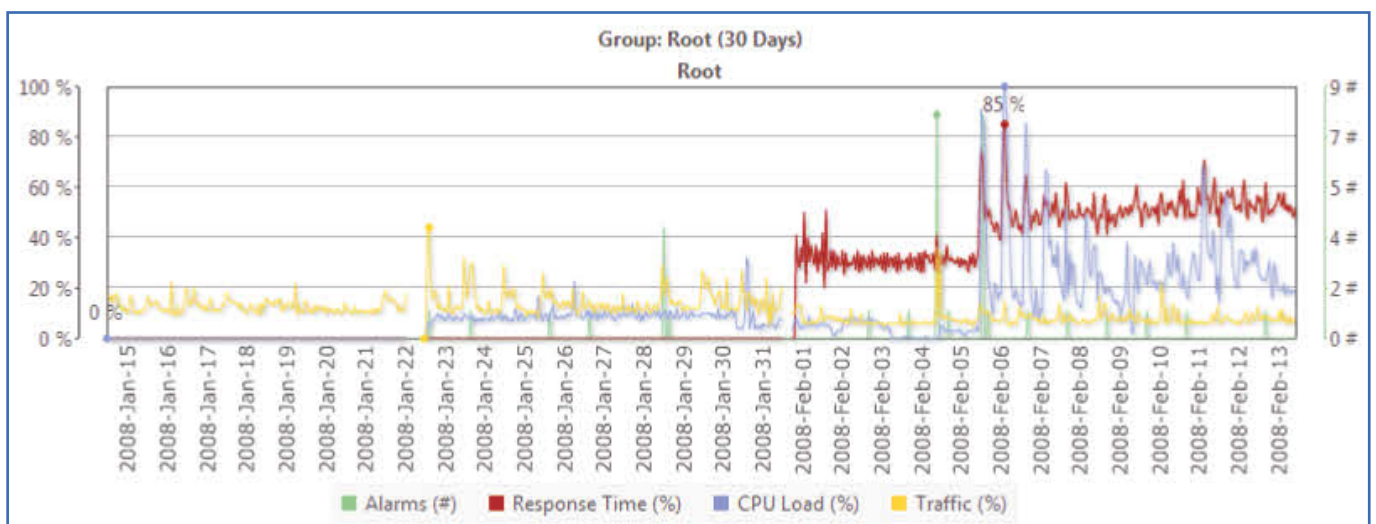
PRTG Network Monitor

Next Generation Network Monitoring

Keep control over your complete network: PRTG delivers all information you need to keep your network highly productive and failure-free — easily, reliably and cost-effective.

PRTG Network Monitor is the powerful network monitoring solution from Paessler AG. It assures the availability of network components and measures traffic and usage. It saves costs by avoiding outages, optimizing connections, saving time and controlling service level agreements (SLAs).

PRTG Network Monitor is the next generation monitoring tool that combines the whole experience of the network monitoring company Paessler with a modern AJAX-powered, webbased interface and a new state-of-the-art monitoring engine which is suitable for networks of any size. Paessler network monitoring tools have proven their value in more than 120,000 installations.



Aggregated statistics (availability, bandwidth/traffic, CPU-load, alerting) give the quickest possible overview of the current status of a complete network.

Your Benefits

One Solution For Everything

PRTG Network Monitor covers all aspects of network monitoring: up-/downtime monitoring, traffic and usage monitoring, SNMP, NetFlow, packet sniffing and many more, combined with concise reporting and analysis features — one solution for everything.

Network Monitoring — Fast, Easy, Self-Explanatory

No courses, no training, just network monitoring — PRTG is consistently optimized for easiest installation and configuration.

Your Network At A Glance

Clarity is everything — PRTG delivers exactly the data you need — clearly, individually and in an appealing manner.

Pure Relaxation

Leave the monitoring of your network to PRTG and create free time for more important tasks. As long as PRTG does not get in touch with you, you know that all systems are working perfectly.

Modesty Counts

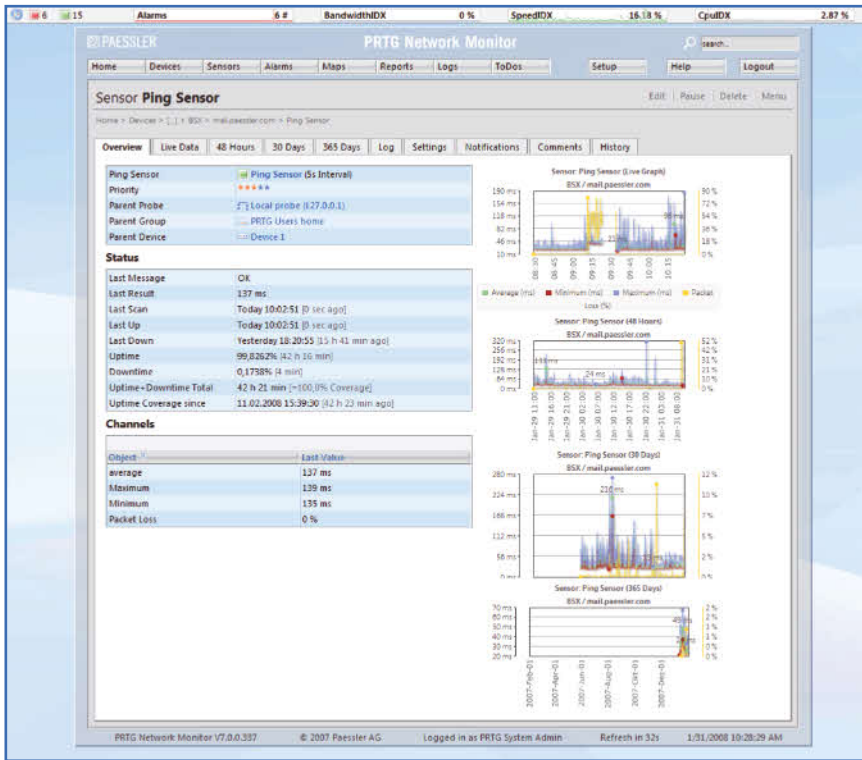
Moderate demands for hard- and software and, last but not least, the good prices make modesty PRTG's middle name.

Save time and money:
Systematic network
monitoring helps you
avoid failures,
optimize networks and
improve services.

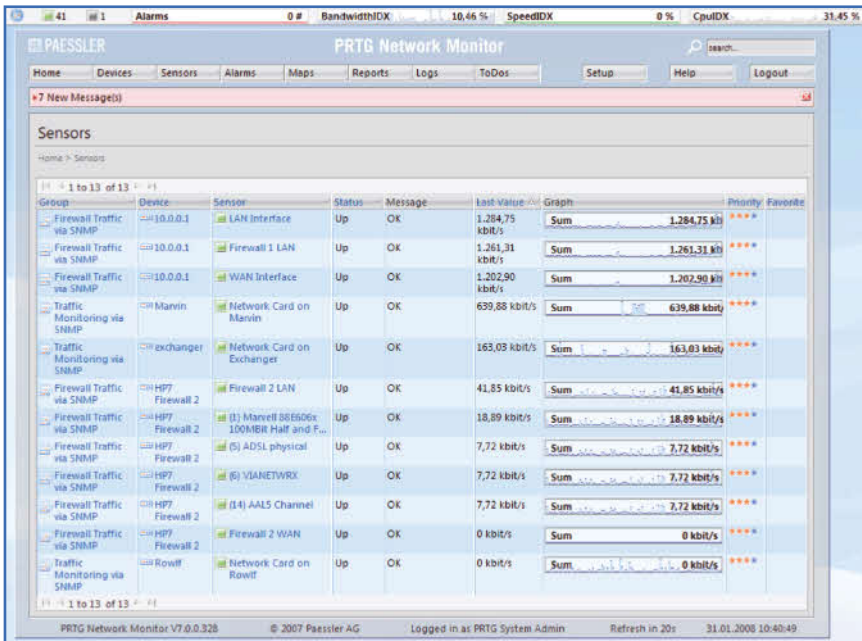
”It was extremely easy to install and configure, it was ready for use within minutes and we've had no hassle with it whatsoever. It proves its worth for us on a daily basis with the information that we get from it.“

Tim Pat Dufficy,
Managing Director,
ServerSpace Limited

ServerSpace Limited is a privately
owned British ISP company



The sensor overview-page delivers all important information at a glance. Graphs offer a quick primary overview. Detailed pages inform more extensively and allow a fast and easy configuration of the sensor.



Overview list of all bandwidth sensors for a LAN, arranged by bandwidth-usage and traffic. The small graphs show the last two hours of activity for the single sensors and, as such, provide quick and concise information about the current network capacity.

Basic Features

- Bandwidth, usage, activity, uptime and SLA monitoring
- Powerful network monitoring engine
- Suitable for all networks
- LAN, WAN, WLAN, and VPN monitoring
- Monitoring of distributed networks via probes (= agents)

Sensors And Protocols

- More than 30 sensor types including PING, HTTP, WMI, SNMP, SMTP, POP3, FTP, RDP, DNS and many others
- Network traffic and behavior analysis using Netflow, packet sniffing
- High performance monitoring by probes (= agents)
- Smart sensors (e.g. automatic cognition and monitoring of multiprocessor systems)
- Preconfigured device templates for Cisco routers, SQL servers, exchange servers, network printers, etc.
- Automatic network discovery & sensor configuration
- Programmable triggers and custom sensors

Display And Reporting

- All new elegant, fast and powerful web based interface (Ajax, Flash)
- Various dashboard layouts for fast overview
- Monitoring results viewable through various perspective options
- Hierarchical view (groups → devices → sensors → channels)
- List of sensors (alphabetical, fastest, slowest, by tag, by type, etc.)
- Reports & logfiles (detailed logs of all activity and results)
- Appealing graphs (for sensors, devices and groups) showing the monitoring data of the last 2 hours, last 48 hours, last 60 days and last 365 days
- Customizable “maps” that bring together monitoring stati, graphs and tables using personalized layouts

Alerting

- Alerts according to individually configured criteria
- Periodic reports (HTML, PDF)
- Various means of notifications (email, SMS, pager message, HTTP request, syslog, etc.)

System Requirements And Data Storage

- HTTP-based API for interfacing with other applications
- Data is stored in Paessler’s own powerful data storage system, highly optimized for monitoring data
- Small download, easy to install
- Attractive licensing packages from freeware to enterprise level
- Runs on Windows XP, Vista, 2000, 2003 or 2008
- Web interface optimized for Google Chrome, IE7 or FireFox 2

“Their software products do everything they say they do and more,” he said. “We’ve been able to use the software for much more than we originally intended to use it for. I’m sure we will be purchasing further from Paessler in the future.”

Pete Gilcrease,
vice-president at
GameData, Inc.

GameData, Inc. operates various
gaming-related Websites such as
Counter-Strike.com

 **PAESSLER®**
the network monitoring company

Paessler AG · Burgschmietstraße 10
90419 Nuremberg · Germany
www.paessler.com

Philippine Distributor
SAV25 Data Systems
7869 Mckinley Street
Makati City Philippines
+632 893-2488
Info@sav25.com
www.sav25.com